

Crosby Straightpoint Radiolink Plus is designed to be rigged with Crosby standard shackles - DNV-GL type approved wireless tension load cell capable of weighing and dynamic load monitoring in capacities from 1t to 300t – from stock with an ATEX and IECEx version available for hazardous areas, zones 0, 1 & 2.

Three versions of the RLP are available:

- Long range 2.4GHz version providing industry-leading wireless range of 1000m or 3280ft to SP's SW-HHP handheld or software options.
- Bluetooth output and can be connected to any smart phone running SP's free HHP app on iOS or Android, at ranges up to 100m or 328ft.
- ATEX/IECEx for hazardous areas, zones 0, 1 & 2. Providing a wireless range of up to 500m or 1640ft to SW-HHP-ATEX handheld.

Constructed from high-quality aerospace grade aluminium, the RLP features an advanced internal design structure. This design provides the product with an unrivalled strength to weight ratio. The use of a separate internal sealed enclosure administers the load cell's electronic components with IP67 or NEMA6 environmental protection, even with the battery cover plate missing. All these features makes it an industry-leading dynamometer, suitable for use in the harshest of environments.

The versatile RLP is able to provide an update rate of 3Hz and can be easily configured to run at industry-leading speeds of up to 200Hz, making it ideal for dynamic force measurement.

Decades of development into this product include many stand out features such as SP's unique strain gauging method that helps compensate for wire rope torque when the Radiolink is loaded. The Radiolink Plus tension load cell can also be used in combination with Straightpoint 'INSIGHT' high speed wireless data logging software allowing for simultaneous control, display and real time data logging of up to 126 Straightpoint wireless load cells.

A full array of wireless accessories are also available including wireless score board, overload alarm and base station with analogue (4-20mA) or 2 relay or RS485 ASCII outputs.

Features & Benefits

- Proprietary 2.4 GHz Wireless
- Remote On-Off from handheld display or software
- ATEX Zones 0, 1 & 2 available
- Design validated by F.E.A.
- 2-year warranty
- DNV-GL Type Approval
- Complies with ASME B30.26
- Bluetooth option is available and connects with a free to download HHP App for iOS and Android

Accessories available for the handheld:

Wall or Cab Mount Bracket

SP model/Part No. SU3282 / 2789228

Rugged Rubber Boot

SP model / Part No. SU4045 2789232

Also available with hazardous
area approval. Zones 0, 1 & 2



ATEX / IECEx Ex ia II C T4 Ga

Certification numbers:

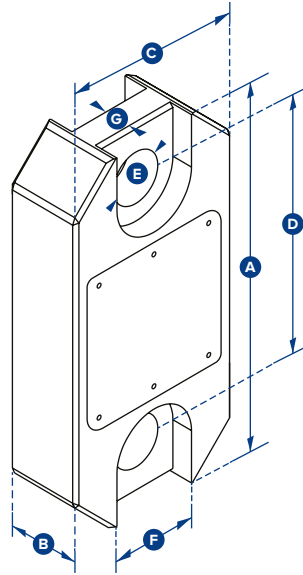
RLP ATEX

IECEX SIR 15.0071X / SIRA 15ATEX2195X / CSAE 22UKEX1267X

SW-HHP ATEX

IECEX SIR 15.0072X / SIRA 15ATEX2196X / CSAE 22UKEX1267X

**Add 'ATEX' to the part number
when ordering ATEX/IECEX products.
For example: RLP6T5-ATEX**



SP Model	RLP1T	RLP2T5	RLP6T5	RLP12T	RLP25T	RLP35T	RLP55T	RLP75T	RLP100T	RLP150T	RLP200T	RLP250T	RLP300T
Crosby part	2789084	2789089	2789094	2789082	2789088	2789091	2789093	2789095	2789081	2789083	2789085	2789087	2789090
Capacity	1,000 kg	2.5 te	6.5 te	12 te	25 te	35 te	55 te	75 te	100 te	150 te	200 te	250 te	300 te
	2,200 lb	5,500 lb	14,300 lb	26,000 lb	55,000 lb	77,000 lb	120,000 lb	165,000 lb	220,000 lb	330,000 lb	440,000 lb	550,000 lb	660,000 lb
Resolution	0.5 kg	0.001 te	0.001 te	0.002te	0.005 te	0.005 te	0.01 te	0.01 te	0.05 te	0.05 te	0.1 te	0.1 te	0.1 te
	1 lb	2 lb	2 lb	5 lb	10 lb	10 lb	20 lb	20 lb	100 lb	100 lb	200 lb	200 lb	200 lb
Units	kg	te	te	te	te	te	te	te	te	te	te	te	te
	lb	lb	lb	lb	lb	lb	lb	lb	lb	lb	lb	lb	lb
Weight	1.5 kg	1.5 kg	2.4 kg	3.7 kg	5 kg	8.6 kg	13 kg	16 kg	34 kg	46 kg	82 kg	82 kg	118 kg
	3.3 lb	3.3 lb	5.3 lb	8.2 lb	11 lb	19 lb	28.7 lb	35.3 lb	75 lb	101.4 lb	180.8 lb	180.8 lb	260 lb
Safety Factor	12:1	7:1	7:1	7:1	5:1	5:1	5:1	5:1	5:1	4:1	5:1	4:1	5:1
Battery Type	Handheld - 2 x AA / Loadcell 4 x AA												
Battery Life	Handheld - 40 hrs / Loadcell 1,200 hrs continuous (Loadcell 500 hrs if Bluetooth)												
Display Type	240x128 multi-line dot matrix with backlight												
Operating Temp	-10 to +50 °C / 14 to 122°F												
Accuracy	±0.1% full scale												
Frequency	2.4GHz												
Range (Max)	1,000 metres / 3,280 feet (100 m / 328 ft if Bluetooth)												
Data Rate	3Hz - up to 200Hz can be ordered for dynamic load monitoring applications												
Protection	IP67												
	NEMA6												
Dimension A	204	204	249	305	340	393	424	470	608	670	700	700	806
	8.03 "	8.03 "	9.80 "	12.01 "	13.39 "	15.47 "	16.69 "	18.50 "	23.94 "	26.38 "	27.56 "	27.56 "	31.73 "
Dimension B	43	43	43	47	60	75	75	75	99	99	144	144	150
	1.69 "	1.69 "	1.69 "	1.85 "	2.36 "	2.95 "	2.95 "	2.95 "	3.90 "	3.90 "	5.67 "	5.67 "	5.91 "
Dimension C	104	104	113	113	115	126	180	202	255	303	350	350	426
	4.09 "	4.09 "	4.45 "	4.45 "	4.53 "	4.96 "	7.09 "	7.95 "	10.04 "	11.93 "	13.78 "	13.78 "	16.77 "
Dimension D	146	146	165	193	215	225	230	260	320	360	350	350	350
	5.75 "	5.75 "	6.50 "	7.60 "	8.46 "	8.86 "	9.06 "	10.24 "	12.60 "	14.17 "	13.78 "	13.78 "	13.78 "
Dimension ØE	24.5	24.5	38	47.5	55	60	76	76	109	109	145	145	160
	0.96 "	0.96 "	1.50 "	1.87 "	2.17 "	2.36 "	2.99 "	2.99 "	4.29 "	4.29 "	5.71 "	5.71 "	6.30 "
Dimension F	48	48	65	Not relevant in this capacity									
	1.89 "	1.89 "	2.60 "										
Dimension G	19	19	32										
	0.75 "	0.75 "	1.26 "										
Crosby Shackle	G2130						G2140						
Loading Pin Ø	19	19	25	35	51	57	57	70	83	95	121	127	152
	3/4 in	3/4 in	1 in	1 3/8 in	2 in	2 1/4 in	2 1/4 in	2 3/4 in	3 1/4 in	3 3/4 in	4 3/4 in	5 in	6 in